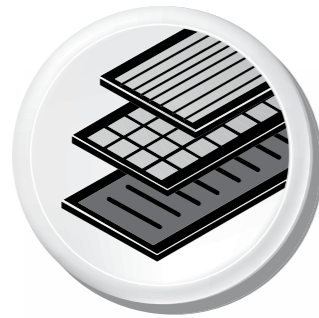
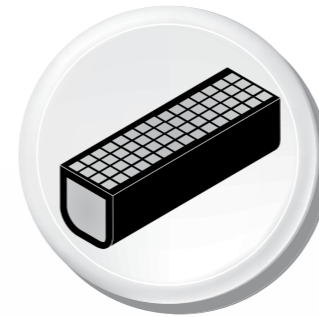


The benefits of **RECYFIX**[®] PLUS X channels



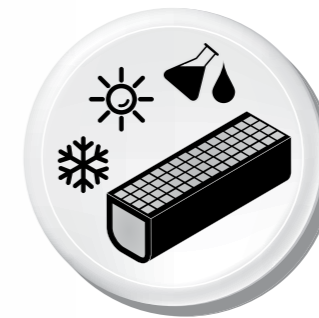
Numerous grating options

- in the materials: ductile iron, galvanised or stainless steel
 - narrow slot width for pedestrian areas available
- = **flexibility**



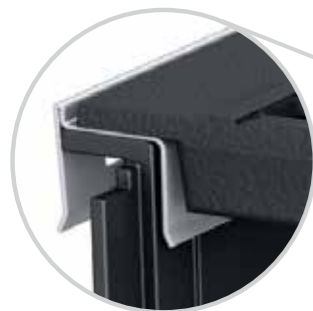
Pre-assembled ready for installation

- channel and grating = one part
 - no spare parts
 - easy handling on stock and construction site
 - cost efficient transport
- = **better gross margin**



High resistance

- high resistance against frost, de-icing salt and UV rays
 - withstands high temperature differences
- = **durability**



Frame system

- galvanised or stainless steel
- = **security**



Low weight ensures easy handling on site

- much lighter compared to channels made of concrete
 - easy transport and installation
- = **cost savings**