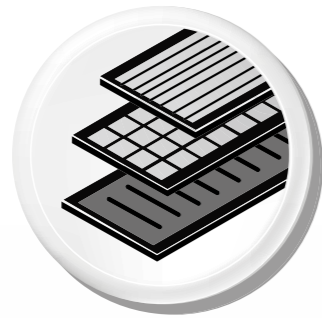
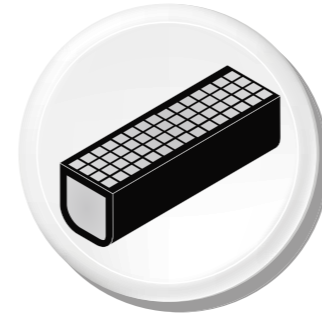


# The benefits of **RECYFIX**®STANDARD channels



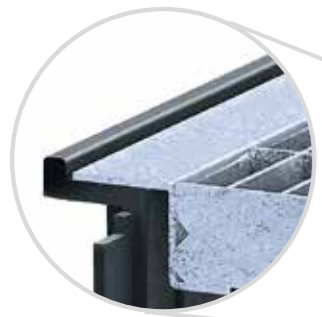
## Numerous grating options

- in the materials: ductile iron, galvanised or stainless steel
  - narrow slot width for pedestrian areas available
- = **flexibility**



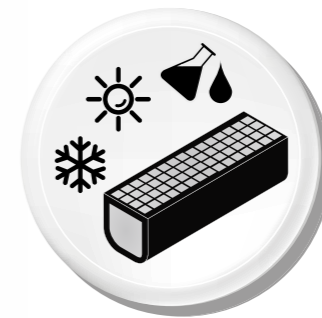
## Pre-assembled ready for installation

- channel and grating = one part
  - no spare parts
  - easy handling on stock and construction site
  - cost efficient transport
- = **better gross margin**



## Frame system

- PP frames
- = **security**



## High resistance

- high resistance against frost, de-icing salt and UV rays
  - withstands high temperature differences
- = **durability**



## Low weight ensures easy handling on site

- much lighter compared to channels made of concrete
  - easy transport and installation
- = **cost savings**