



MONOTEC+

Monolithic, pre-cast, slotted
linear drainage

'A ready to use and pre-cast drainage system makes installation work simple and easy.'



long-lasting product



lower costs



**QUICK
INSTALLATION**

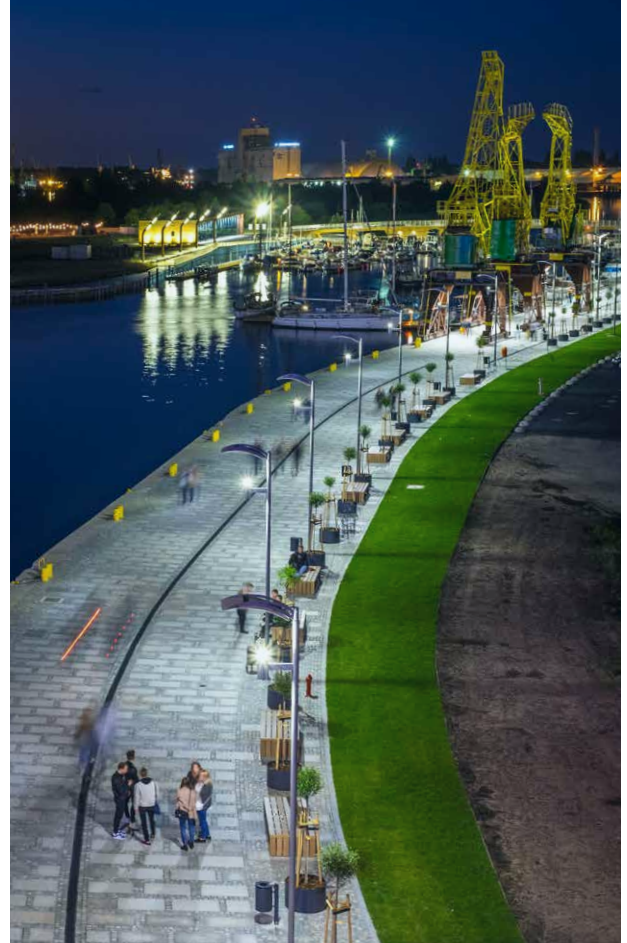


MAIN APPLICATION AREAS

LOGISTICS FACILITIES*



MARKET SQUARES AND PROMENADES



PETROL STATIONS



ENTRANCES WITH HEAVY TRAFFIC*



* If the drainage is planned to be installed in place exposed to longitudinal forces from lorries with trailers when maneuvering, this should be consulted with HAURATON representatives.

BENEFITS OF USING MONOTEC+ 230 AND 280

EXCELLENT HYDRAULIC PARAMETERS

- large inlet cross-section with the **FIBRETEC®** design
- large capacity due to the deep structure of the channel

= **SAFETY**



LASTING SOLUTION

- a modified synthetic material with glass fibre (PP-GF)
- resistant to heavy loads and intensified traffic in everyday use

= **PERFORMANCE GUARANTEE**



HIGH RESISTANCE

- high resistance to frost, de-icing salts and UV radiation
- resistance to big differences in temperature
- resistance to aggressive chemicals

= **QUALITY GUARANTEE**



HIGHLY STABLE MONOLITHIC CONSTRUCTION

- monolithic channel in a pre-cast reinforced concrete body
- high-quality of individual elements
- resistant to frequent traffic
- pre-cat channel body makes installation easier

= **DURABILITY GUARANTEE**



LOW MAINTENANCE COSTS

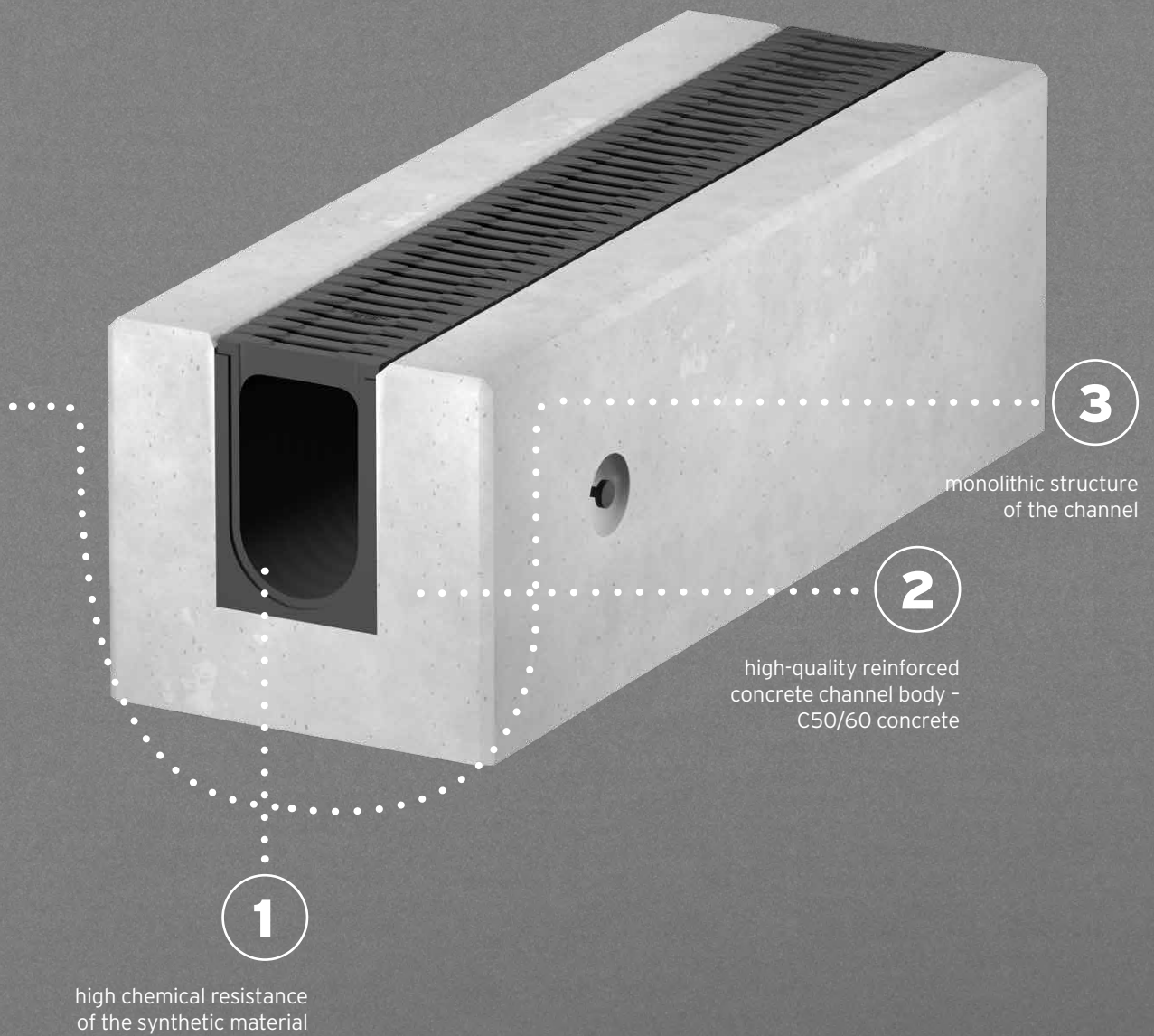
- easy cleaning - the possibility of rinsing through the inspection box
- a durable and resistant system with an appealing design
- quick installation - more effective

= **SAVING TIME AND MONEY**



DEDICATED

to high volumes of traffic and heavy loads, such as industrial transport areas, roads and petrol stations.



OPTIMISED INTAKE AREA

The structure of FIBRETEC inlet slots makes it possible to effectively collect large amounts of rainwater.

The application of monolithic linear drainage with transverse slots

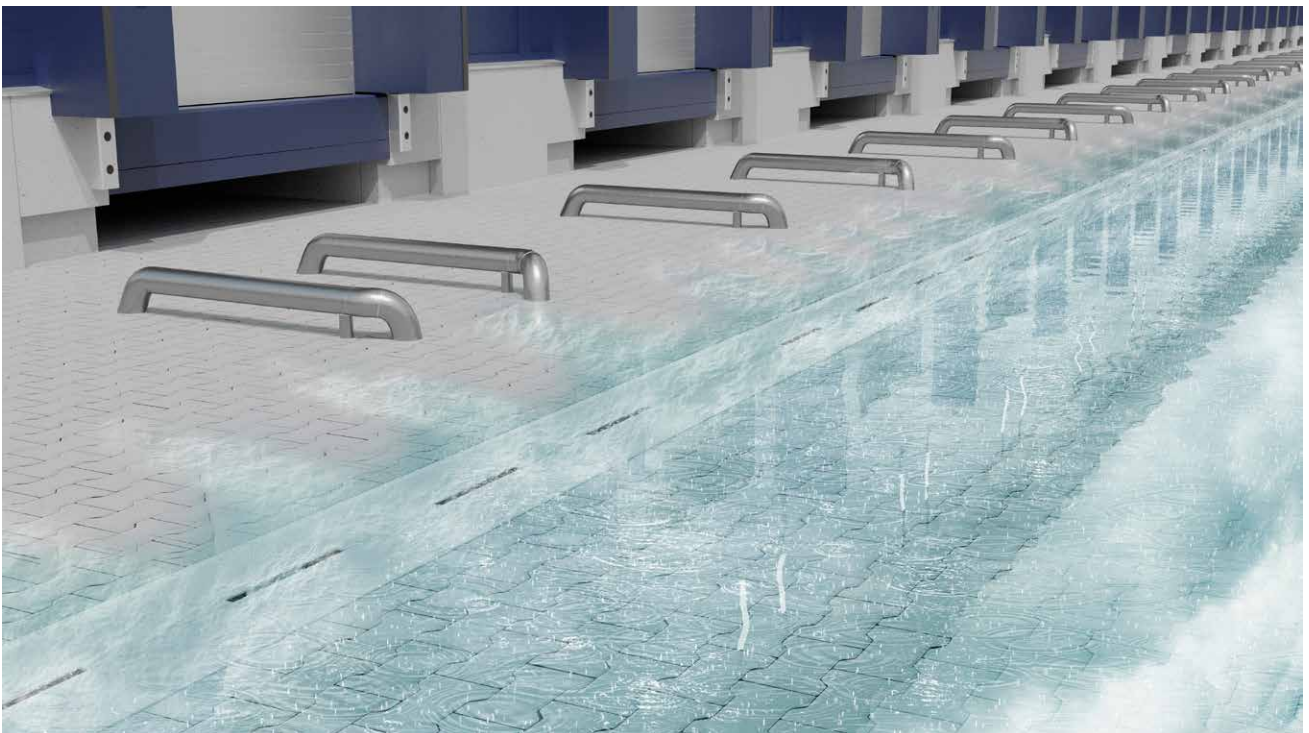


On hardened surfaces, especially in areas with land slopes the intake area of the channel is an important element of the drainage system.

Even when the slope is small, rainwater flows towards the drainage with an increased speed. To avoid uncontrolled flooding of the building, the system which collects rainwater needs to be **highly efficient**. The

width and shape of the intake area of the drainage system have a huge impact on its capacity to collect surface water. Slots with the FIBRETEC® design make it possible to **smoothly and efficiently collect** even large amounts of flowing water.

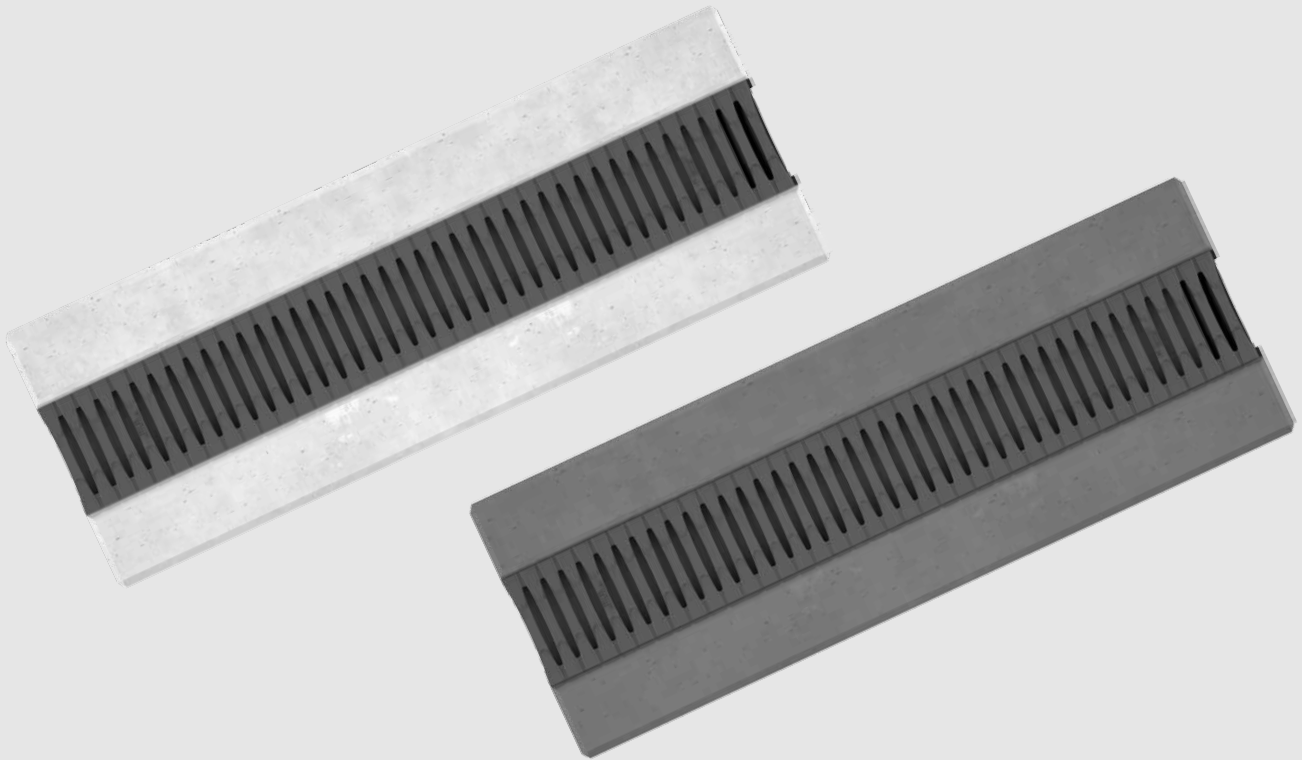
The application of drainage with narrow longitudinal slots and bridges



The application of narrow slots may **significantly lower the capacity to effectively collect** rainwater. During heavy rainfall, the flow of water may be so intense that it may spill over too narrow slots and keep flowing. This may be the case especially when there are impermeable or developed sections in the drainage system.

A properly selected drainage system makes it possible to effectively collect rainwater and protects buildings even in extreme weather conditions.

AESTHETICALLY PLEASING FIBRETEC DESIGN



CORROSION RESISTANCE

- made of a high-quality synthetic material
- FIBRETEC® slots made of polyamide with an elegant design, hydraulically optimised and have an anti-slip surface

= **LONG LASTING PRODUCT**



LONG USE GUARANTEE RESISTANCE

- high resistance to frost, de-icing salts and UV radiation
- resistance to big differences in temperature

= **DURABILITY**



AWARDED DESIGN

- FIBRETEC® slots received FOCUS OPEN DESIGN AWARD
- nominated for GERMAN Design Award

= **HIGH-QUALITY PRODUCT**



OPTIMISED HYDRAULIC CAPACITY OF CHANNELS

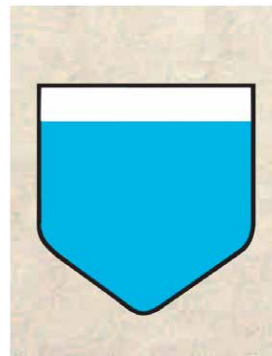
The system makes it possible to drain rainwater even from large areas. High hydraulic capacity and the shape of channels ensure additional retention capacity. The application of MONOTEC+ channels requires fewer trash boxes and connections.



NW 100, Type 230





NW 100, Type 280



Hydraulic capacity limited
product structure

MONOTEC+

Nominal size	Height	Cross-sect.	Capacity/ Channel
100 mm	230 mm	190.5 cm ²	 19.1 l
100 mm	280 mm	245.5 cm ²	 24.6 l

MONOTEC+

**DRAINAGE WITH PRE-CAST
REINFORCED CONCRETE BODY, READY FOR INSTALLATION**

CONTRARY TO WHEN LINEAR DRAINAGE IS BUILT OVER ON CONSTRUCTION SITES, PRE-CAST CHANNELS WITH REINFORCED CONCRETE BODY HAVE A WIDE RANGE OF ADVANTAGES, THE MOST IMPORTANT OF WHICH INCLUDE:

PRE-CAST CHANNEL BODY

- no need to make the channel body have a hyphen on-site, which saves time and money
- reinforced concrete, class C50/60/ XF4, XA3, guarantees stability and durability

= COMFORT AND STABILITY



PREDICTABILITY AND TESTED SOLUTIONS

- concrete with a fixed formula
- production process in fixed and controlled circumstances
- the possibility of adjusting the reinforced concrete channel body to the Investor's needs (e.g. changing its colour, texture or shape).
- manufacturing drainage of a specific length (cutting drainage to the length on the construction site means that the reinforcement will not have an appropriate cover, so there could potentially be corrosion. At the production stage, the element is made to the desired length, the reinforcement is properly cut and all construction elements are adjusted to the length).

= RELIABLE AND ADJUSTED PRODUCT



DIVISION OF LIABILITY AND REPEATABILITY OF PRODUCTION

- in the case of installing linear drainage whose concrete channel body is made on the construction site, liability for the system is divided between the manufacturer and the contractor. In the case of linear drainage with pre-cast reinforced-concrete channel body, only the manufacturer is liable for the entire system
- pre-casting is the only process which makes it possible to deliver fully repetitive products of high quality

= RELIABLE AND ADJUSTED PRODUCT



PRE-CAST CHANNEL BODY GIVES YOU NEW POSSIBILITIES

OUR PRE-CAST REINFORCED CONCRETE CHANNEL BODY MAKES IT POSSIBLE TO ADJUST ITS SURROUNDINGS TO THE REQUIREMENTS OF A GIVEN PROJECT



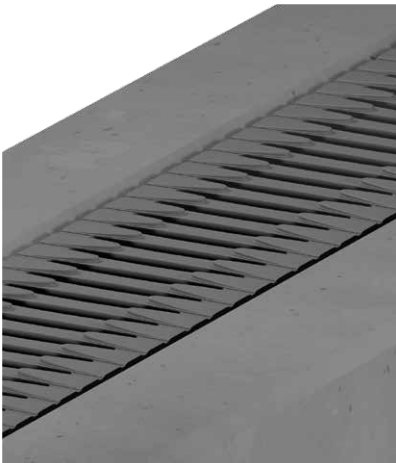
DYEING THE CHANNEL BODY IN ACCORDANCE WITH AN INDIVIDUAL ORDER



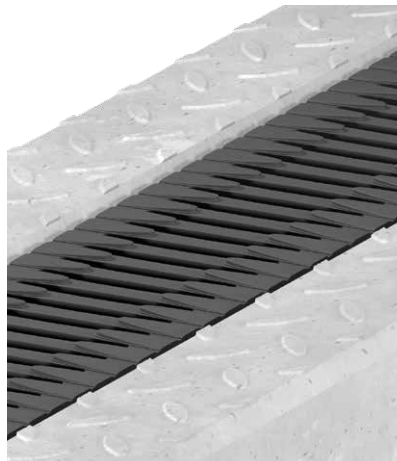
ADJUSTING PARAMETERS, E.G. THE HEIGHT OF THE REINFORCED CONCRETE CHANNEL BODY, TO THE REQUIREMENTS OF THE PROJECT



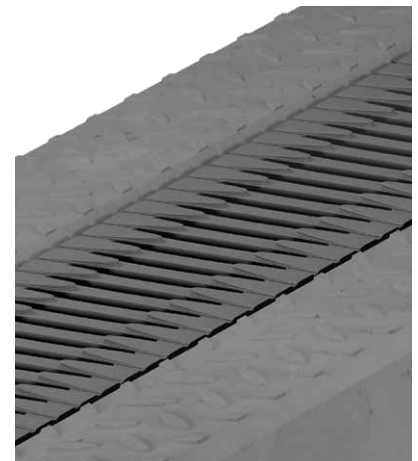
GIVING IT A UNIQUE TEXTURE AND AN ANTI-SLIP SURFACE OR MARKING AN AREA



concrete channel body
anthracite-coloured



concrete channel body with corrugated
texture



anthracite-coloured concrete channel
body with corrugated texture

MONOTEC+ 230 AND 280

Monolithic, pre-cast concrete channel with transverse slots PA-GF.

MONOTEC+ complies with EN 1433
and is suitable for the following load classes:



Class A 15



Class B 125

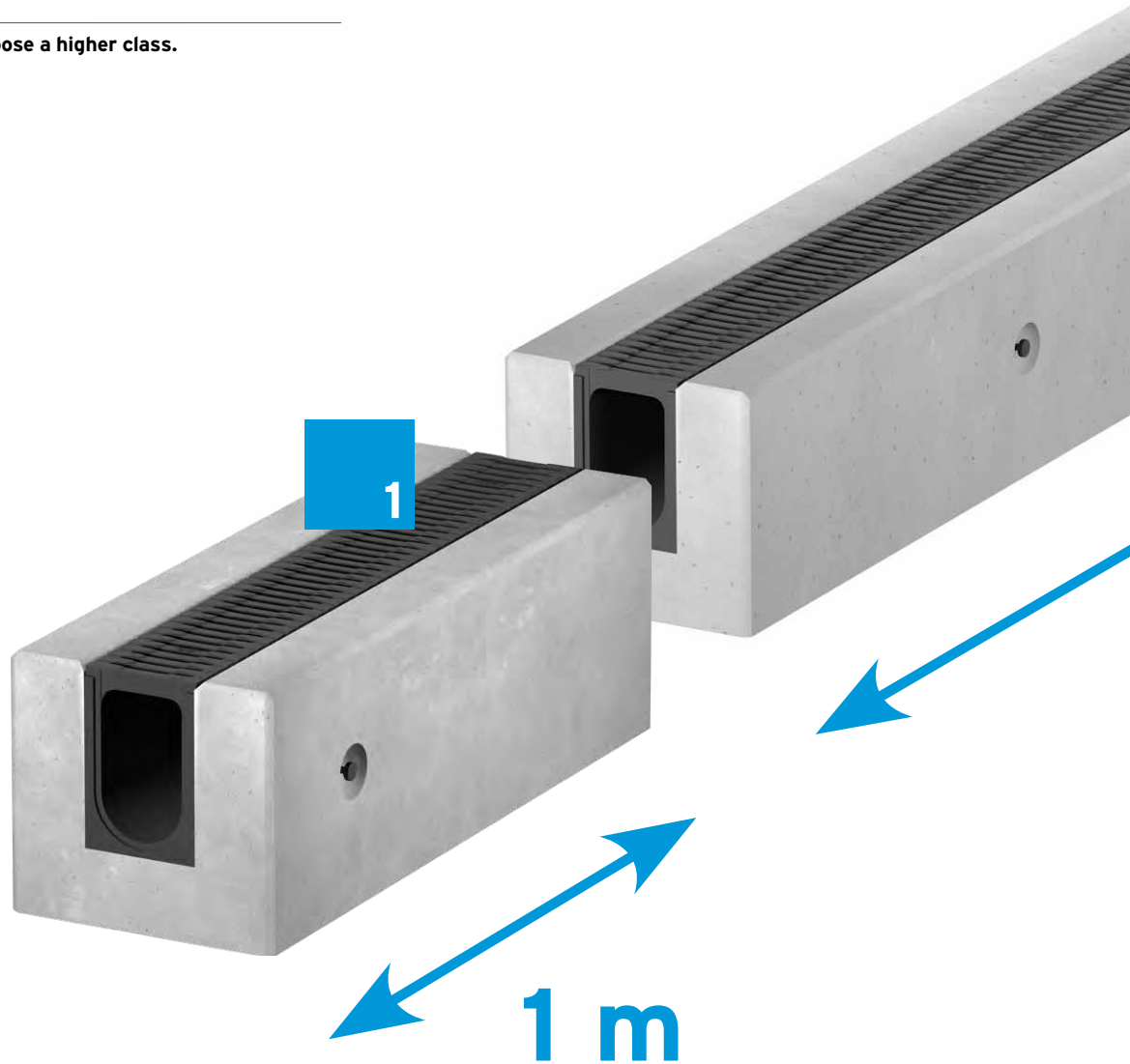


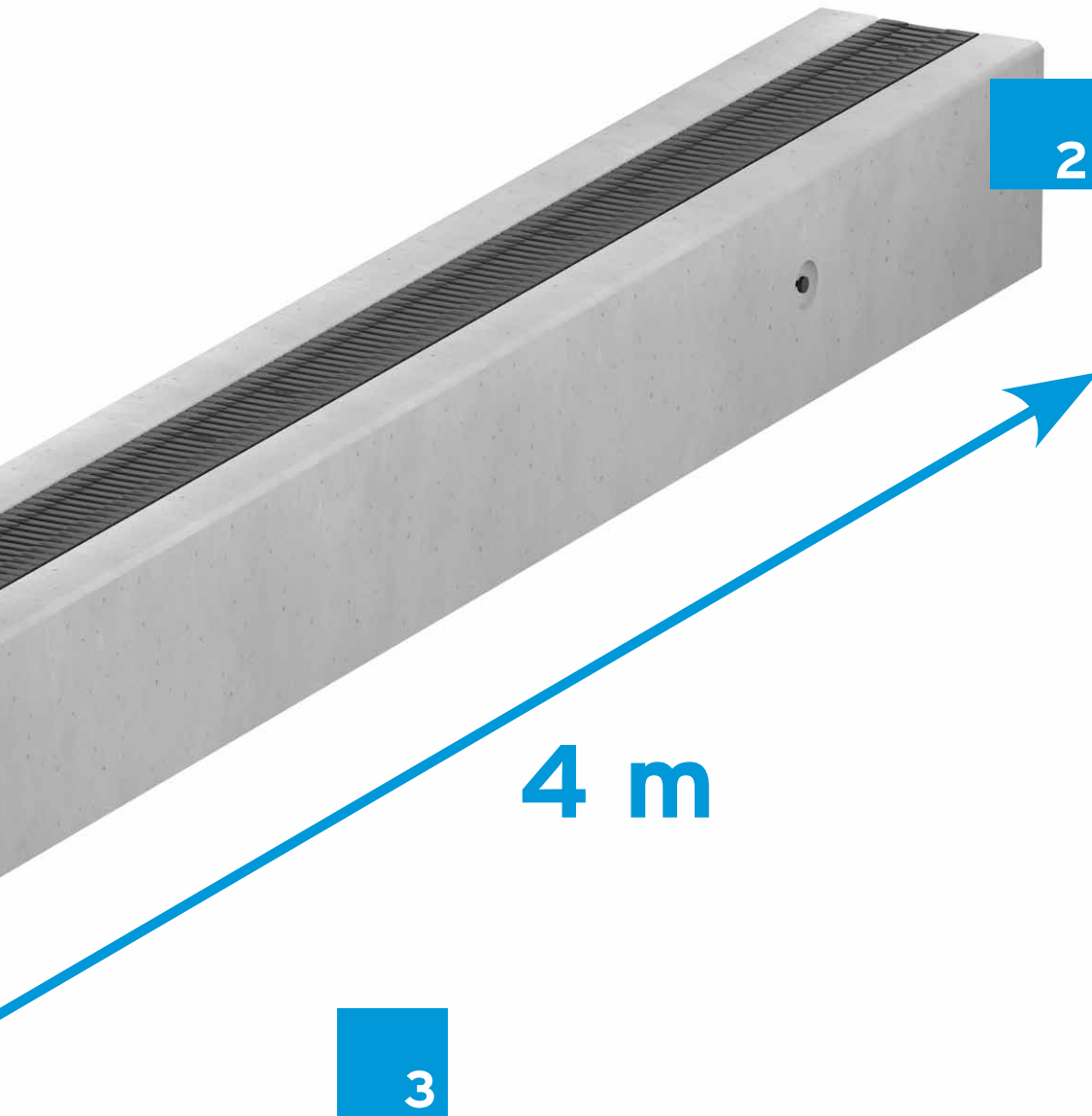
Class C 250



Class D 400

In case you have doubts, choose a higher class.





1

■ slots made of a modified synthetic material, in accordance with EN 1433 and CE certification

2

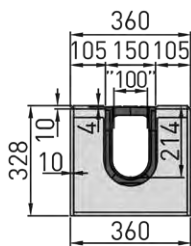
■ our pre-cast channel body reduces the installation time on construction sites

3

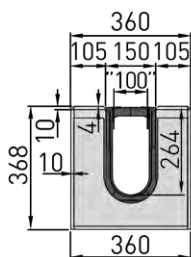
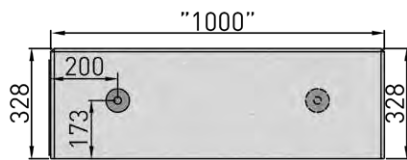
■ 4-metre and 1-metre sections make it possible to quickly install long drainage systems

MONOTEC+ 230

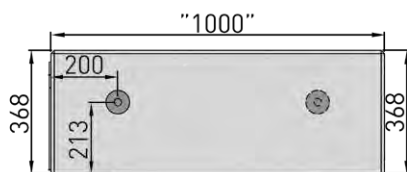
MONOTEC+ 280



type 230, 1000 mm



type 280, 1000 mm



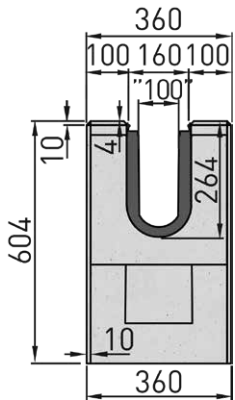
	Length mm	Width mm	Height mm	Drainage cross-sect. cm ² /m	Intake cross-sect. cm ² /m	Weight kg	Number of pcs/pallet	Item No.
type 230	1000	360	328	190	190,5	240,0	-	39231PL
type 230	4000	360	328	190	190,5	1000,0	-	39234PL
type 280	1000	360	328	245	372,0	287,5	-	39281PL
type 280	4000	360	328	245	372,0	1150,0	-	39284PL

Channels with a pre-cast concrete channel body are equipped with spherical head anchor 1,3 t (head diameter - 19 mm, pivot diameter 10 mm).

The product does not include lifting handle.

A joint plate is supplied with each channel and trash box - 1 pc.

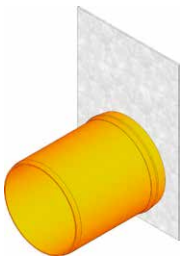
Changes of color and structure of the top surface of pre-cast concrete channel body are optional.



trash box, DN 200



ductile iron grating SW 14 mm, black



end cap with outlet DN 100, galvanised, type 230



connection plate with screw set, galvanised, channel type 230

Further accessories

	Length mm	Width mm	Height mm	Weight kg	Number of pcs/pallet	Item No.
trash box, DN 200*	500	360	604	250,0	-	39205PL
ductile iron grating SW 14 mm, black	500	149	20	3,7	264	28063
end cap without outlet, galvanised, type 230	-	150	224	0,5	-	36080
end cap with outlet DN 100, galvanised, type 230	-	150	224	0,7	-	36090
end cap without outlet, galvanised, type 280	-	150	274	0,6	-	36082
end cap with outlet DN 110, galvanised, type 280	-	150	274	0,8	-	36092
connection plate with screw set, galvanised, channel type 230	-	216	283	1,1	-	36032
connection plate with screw set, galvanised, channel type 280	-	216	283	1,0	-	36037
universal head-link	-	-	-	-	-	RD00
joint plate for channel type 230	5	340	283	0,02	-	39237PL
joint plate for channel type 280	5	340	323	0,02	-	39287PL
cutting to length						891P
cutting at an angle (2 cuts per 1 connection)						892P
drilling holes						893P
inserting connectors						894P

* attached to trash box - 1 pc.



Tel. +48 601 704 353
biuro@hauraton.com • www.hauraton.com.pl
HAURATON Polska sp. z o.o. • ul. Ostrowska 398 • 61-312 Poznań

