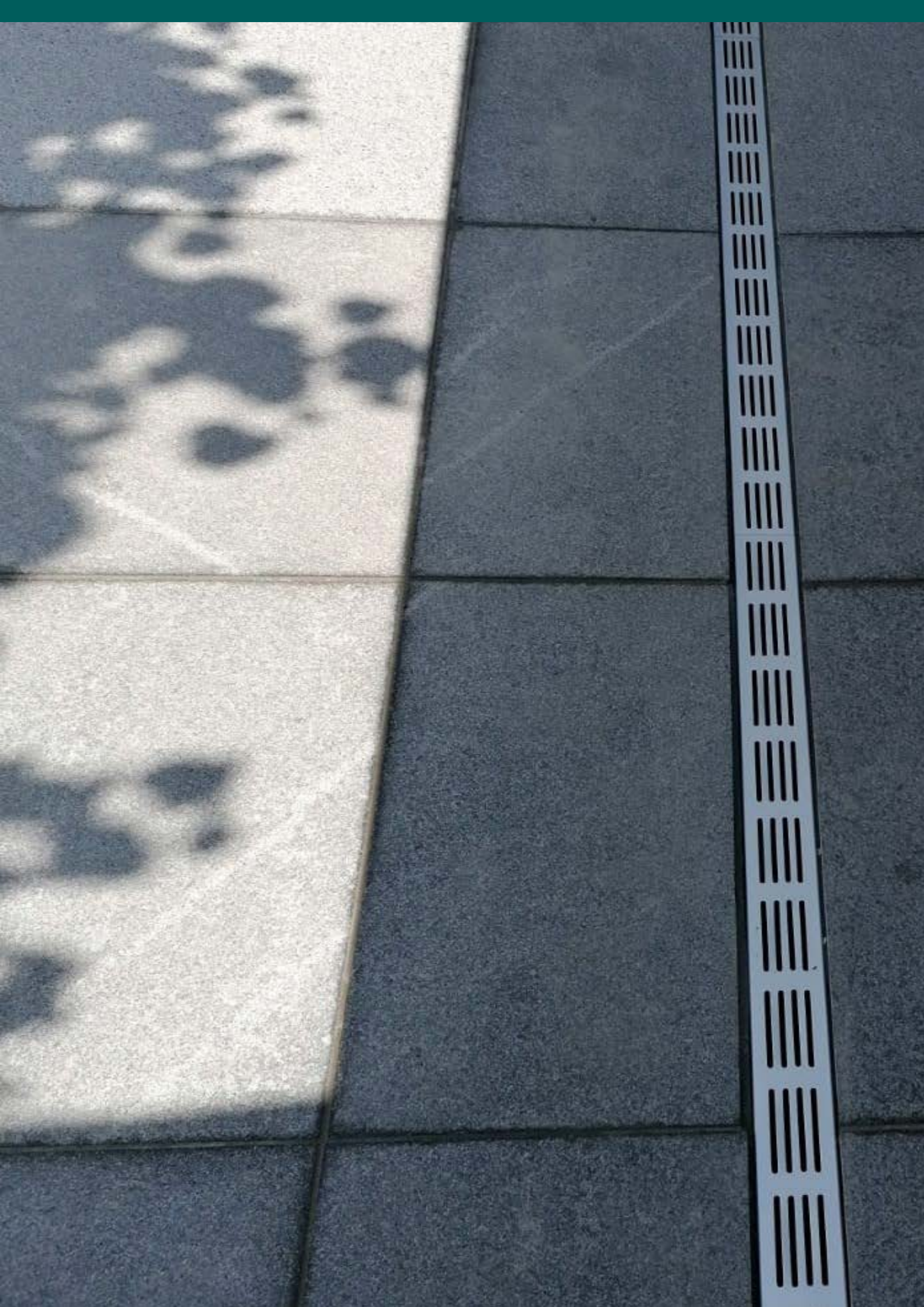




E-TEC THRESHOLD CHANNEL

**Slimline drainage channel
for domestic, commercial
and landscaping projects**



E-TEC THRESHOLD CHANNEL

Slimline channel for domestic, commercial and landscaping projects

1 Requirements

Channels for home and garden applications need to:

- prevent water ingress with safe and level access
- be light to transport and simple to install
- be adaptable to project design
- offer a modern look with aesthetic appeal

2 Solutions

E-TEC channels meet these requirements offering:

- excellent functionality
- lightweight materials
- corner and t-junction connections to create angles
- sleek geometric gratings in aluminium and stainless steel

3 Application areas

- private homes
- patios
- door entrances
- courtyard areas
- gardens
- swimming pools



E-TEC THRESHOLD CHANNEL

Features of the channel

Slotted grating

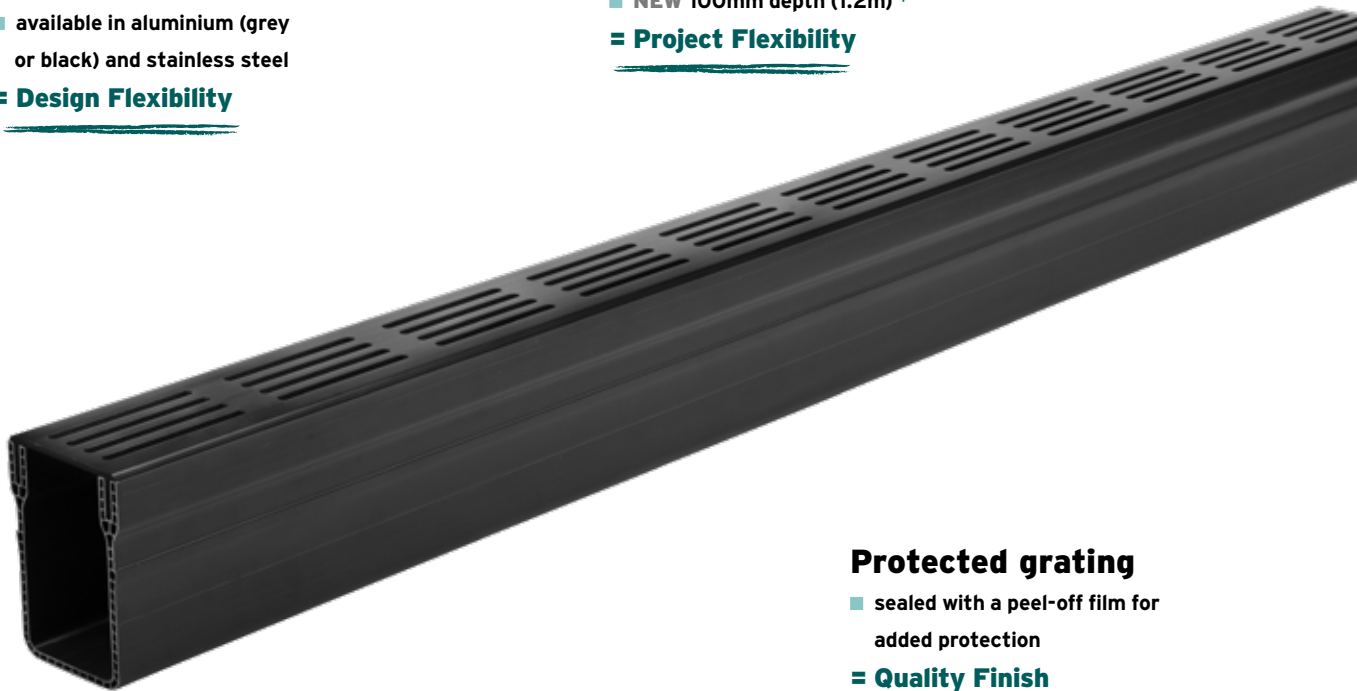
- available in aluminium (grey or black) and stainless steel

= Design Flexibility

Different depths and lengths

- 100mm and 60mm depth (1.0m)
- NEW 100mm depth (1.2m) *

= Project Flexibility



Protected grating

- sealed with a peel-off film for added protection

= Quality Finish

Easy installation

- connectors available in both 100mm and 60mm depths

= Secure and Simple

Lightweight materials

- weighs up to 2.22kg

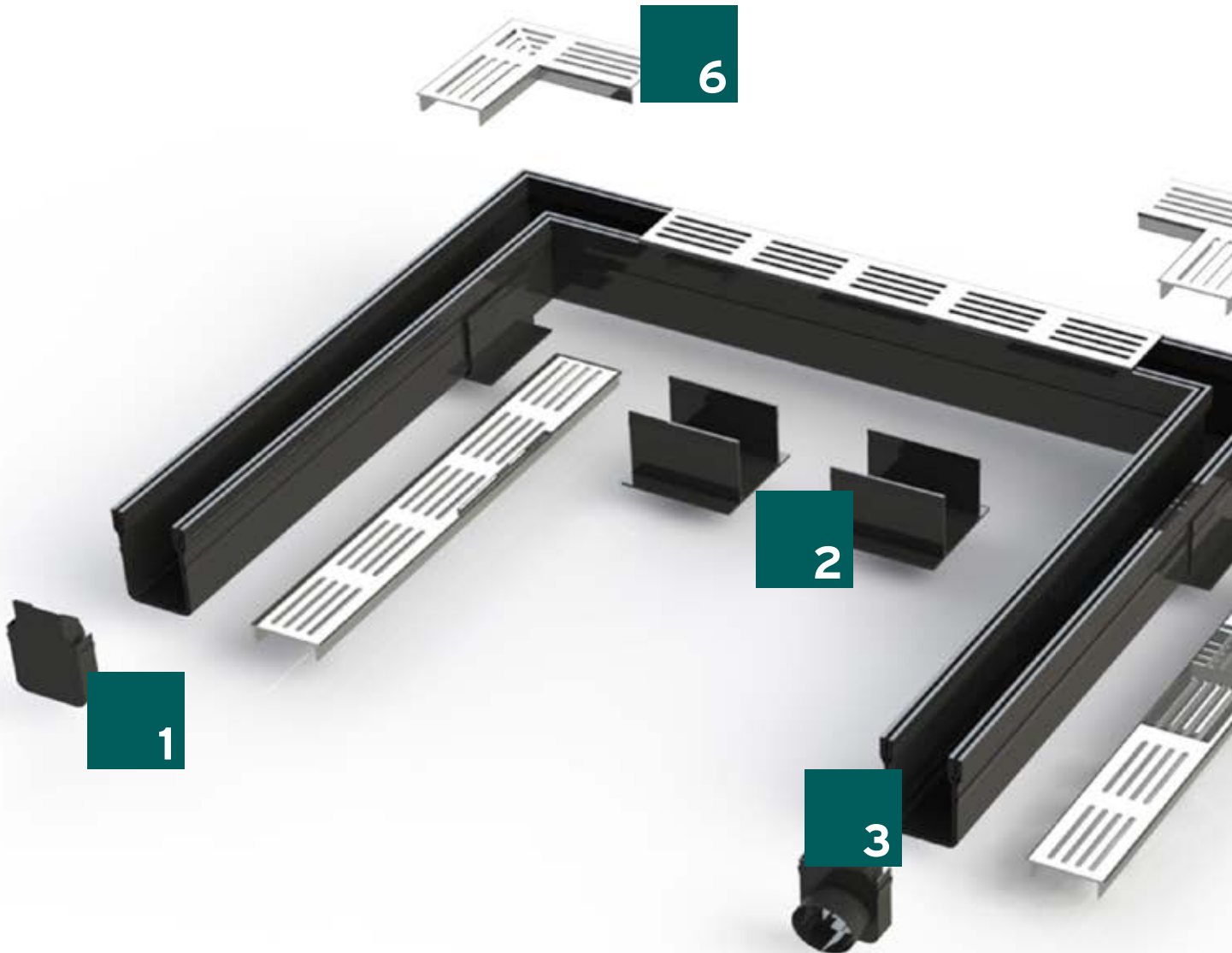
= Easy Transport and Install



* 1.2m currently available in black aluminium and grey aluminium finishes only

E-TEC CHANNEL SYSTEM

The complete system



1

■ Closed end cap

2

■ Channel connector

3

■ End cap with outlet DN 50

4

■ Channel connector with outlet
DN 75

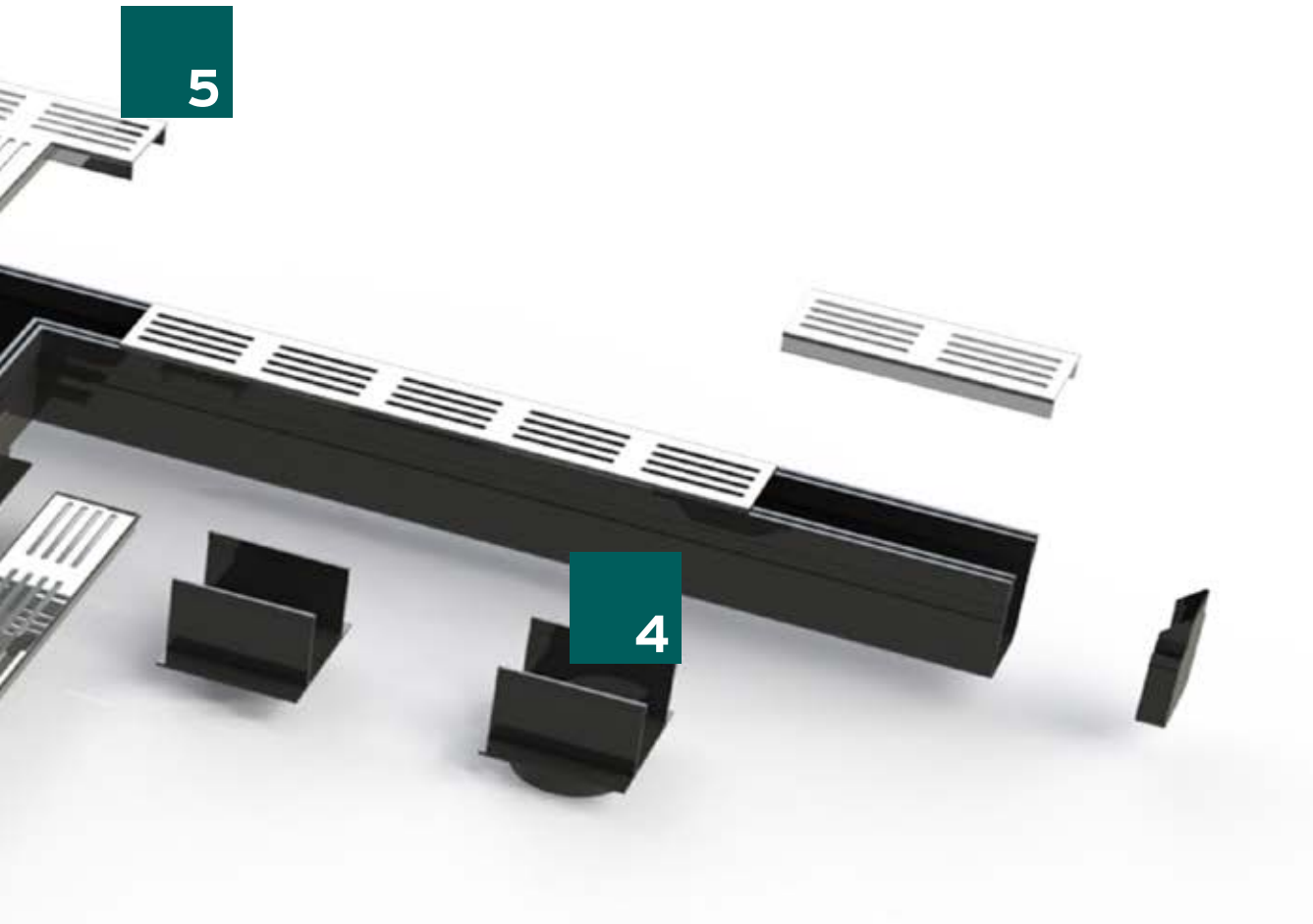
5

■ T-junction

6

■ Corner unit

Gratings are made from aluminium or stainless steel



E-TEC threshold channels provide efficient drainage in areas such as:

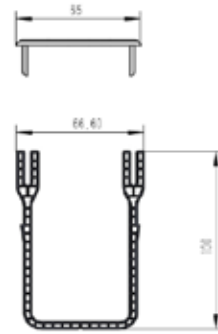
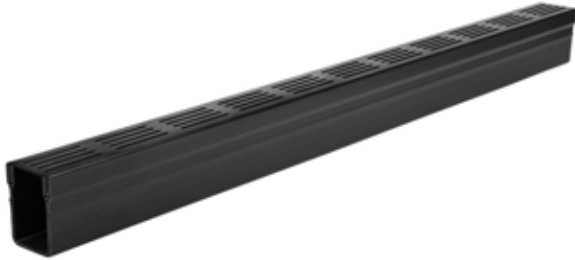
- doorways
- bi-fold doors
- garden patios
- swimming pools

E-TEC channels are tested to load class A15, making them suitable for pedestrian areas.

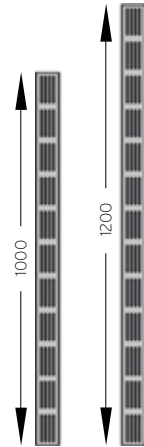
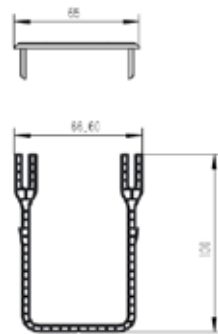
E-TEC THRESHOLD CHANNEL

E-TEC THRESHOLD CHANNEL

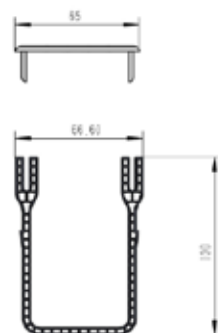
with black aluminium grating,
1.0m, 1.2m



with grey aluminium grating,
1.0m, 1.2m



with stainless steel grating
1.0m



	Length mm	Width mm	Height mm	Drainage cross section cm ²	Intake cross section cm ² /m	Weight kg	Item No.
E-TEC with black aluminium grating, 1.0m	1000	65	103	47	158	1.75	10857
E-TEC with grey aluminium grating, 1.0m	1000	65	103	47	158	1.75	10854
E-TEC with stainless steel grating, 1.0m	1000	65	103	47	158	2.2	11124
NEW E-TEC with black aluminium grating, 1.2m	1200	65	103	47	158	2.22	11275
NEW E-TEC with grey aluminium grating, 1.2m	1200	65	103	47	158	2.22	11274

E-TEC THRESHOLD CHANNEL

E-TEC ACCESSORIES



Channel connector



Closed end plate



Connector with outlet DN 75



End plate with outlet DN 50



E-TEC corner unit
with grey aluminium grating



E-TEC corner unit
with black aluminium grating



E-TEC corner unit
with stainless steel grating



E-TEC T-junction
with grey aluminium grating



E-TEC T-junction
with black aluminium grating



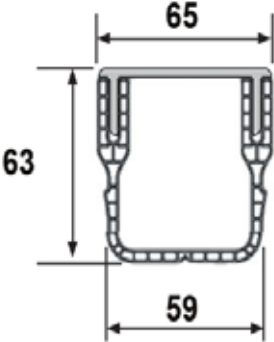
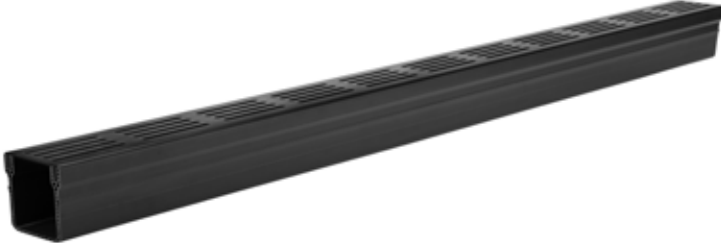
E-TEC T-junction
with stainless steel grating

	Length mm	Width mm	Height mm	Weight kg	Item No.
E-TEC connector	100	65	71	0.095	10863
E-TEC closed end plate	20	65	103	0.030	10865
E-TEC connector with outlet DN 75	100	65	71	0.105	10864
E-TEC end plate with outlet DN 50	20	65	103	0.030	10866
E-TEC corner unit with grey aluminium grating	149 / 149	65	103	0.625	10855
E-TEC corner unit with black aluminium grating	149 / 149	65	103	0.625	10858
E-TEC corner unit with stainless steel grating	149 / 149	65	103	0.57	11125
E-TEC T-junction with grey aluminium grating	156 / 182	65	103	0.7	10856
E-TEC T-junction with black aluminium grating	156 / 182	65	103	0.7	10859
E-TEC T-junction with stainless steel grating	156 / 182	65	103	0.65	11126

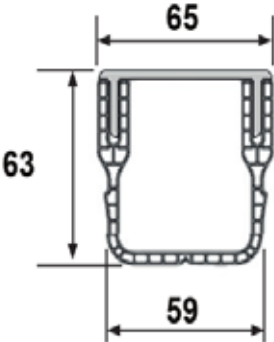
E-TEC SHALLOW THRESHOLD CHANNEL

E-TEC SHALLOW THRESHOLD CHANNEL

with black aluminium grating, 1.0m



with grey aluminium grating, 1.0m



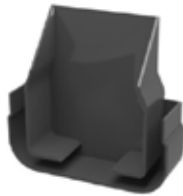
	Length mm	Width mm	Height mm	Drainage cross sec- tion cm ²	Intake cross section cm ² /m	Weight kg	Item No.
E-TEC SHALLOW with black aluminium grating, 1.0m	1000	65	63	27	158	1.3	10872
E-TEC SHALLOW with grey aluminium grating, 1.0m	1000	65	63	27	158	1.3	10869

E-TEC SHALLOW THRESHOLD CHANNEL

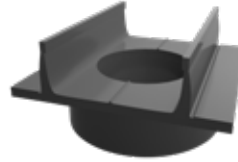
E-TEC SHALLOW ACCESSORIES



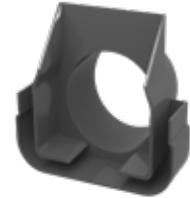
Channel connector



Closed end plate



Connector with outlet DN 75



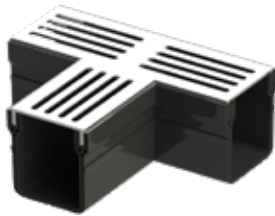
End plate with outlet DN 50



E-TEC SHALLOW corner unit
with grey aluminium grating



E-TEC SHALLOW corner unit
with black aluminium grating



E-TEC SHALLOW T-junction
with grey aluminium grating



E-TEC SHALLOW T-junction
with black aluminium grating

	Length mm	Width mm	Height mm	Weight kg	Item No.
E-TEC SHALLOW connector	100	65	63	0.071	10878
E-TEC SHALLOW closed end plate	20	65	63	0.019	10880
E-TEC SHALLOW connector with outlet DN 75	100	65	63	0.09	10879
E-TEC SHALLOW end plate with outlet DN 50	20	65	63	0.024	10881
E-TEC SHALLOW corner unit with grey aluminium grating	149 / 149	65	63	0.38	10870
E-TEC SHALLOW corner unit with black aluminium grating	149 / 149	65	63	0.38	10873
E-TEC SHALLOW T-junction with grey aluminium grating	156 / 182	65	63	0.45	10871
E-TEC SHALLOW T-junction with black aluminium grating	156 / 182	65	63	0.45	10874



All drawings, measurements and weights are non-committal. We reserve the rights to make technical changes for improvement.

HAURATON UK
Unit 18-19 Saddleback Road
Northampton
NN5 5HL

Tel. 01582 501380
Fax. 01582 501399
sales-uk@hauraton.com
www.hauraton.com